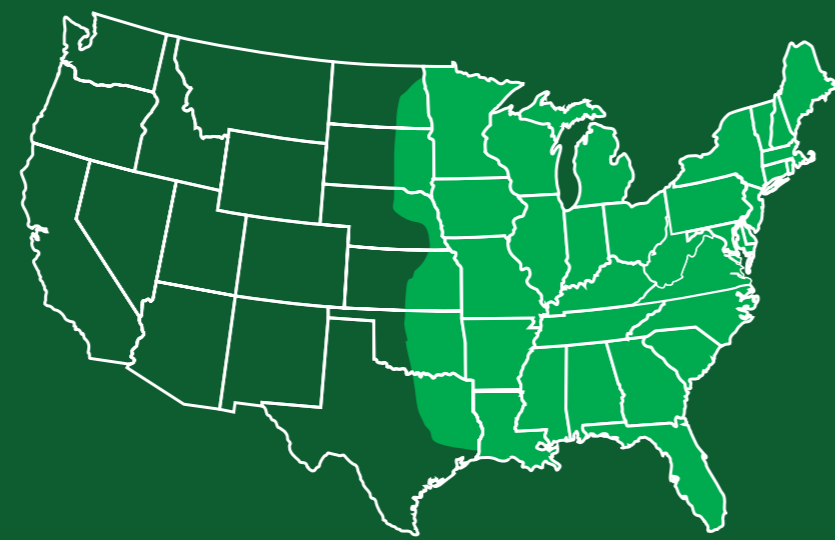


Short-tailed Shrew

Blarina brevicauda

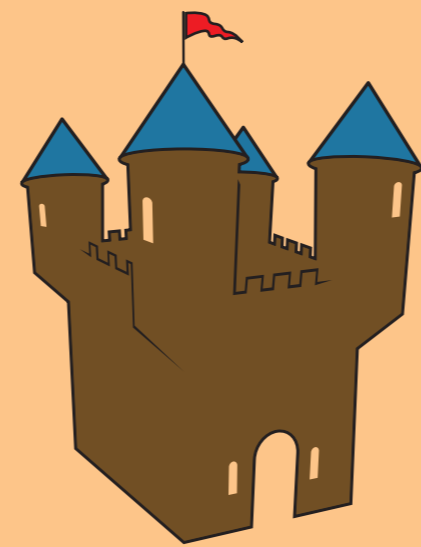
Habitat: Underground in forests, marshes, brushland and grassland

Range: Eastern United States



Fun Facts!

- Three baby shrews weigh the same as a single penny!
- The saliva of the short-tailed shrew is venomous — the only mammal with such an adaptation. The venom can kill a rabbit and cause a burning sensation and severe swelling in humans.
- **What can you do to protect shrews?** Keep cats inside. Cats will prey on short-tailed shrews if given the chance.



Fact or Fairy Tale?

The short-tailed shrew will starve to death if it does not eat every couple of hours...Fact! Short-tailed shrews need a constant food supply to maintain their energy levels.

Shrews are born with their adult teeth...Fact!

